

Myndplay User Manual

This manual has been written to guide you through the installation and interface of the revolutionary Myndplay interactive brain controlled media player.

What is Myndplay?

Myndplay is the worlds first brain controlled interactive video player that allows viewers to use their mind to interact with, control or direct the outcome or sequence of a video or movie file.

Using the revolutionary Neurosky® chip Technology and BrainBand headset combined with the innovative MIME® Technology, Myndplay allows viewers a level of control, interactivity and competition that has never before been achieved in the fields of video and film.

Using relaxation and attention/focus you can interact with the movie or video file to dictate the direction or just sit back and let your mind pick for you.

Truly immersive viewing has arrived, and is here to stay.

System Requirements

Platform Requirements: Mac & Windows XP, Vista, 7

up too 35MB of space required

Please Ensure you have the latest version of VLC Installed with ActiveX enabled

Installation

Myndplay installation is very simple, double click the installer file and if asked would you like to install or continue? Click yes or accept.

Myndplay is now installed.

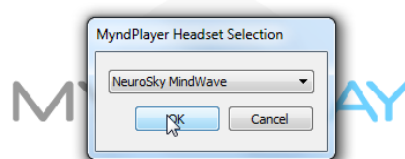
To start Myndplay click Start or the Windows Icon on your taskbar, go to all programs and look for the Myndplay folder, select and click Myndplay to open.

Important: Before starting Myndplay please connect and pair your headset to your Mac or PC..Further instructions below...

Using Myndplay

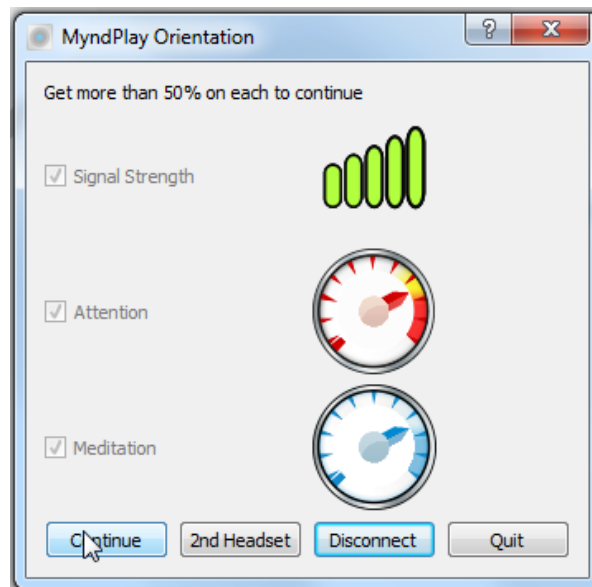
When you first open Myndplay the first screen you will see is the connection window and player screen as below.

Requesting headset type



To connect the headset to the player select your headset and MyndPlay will automatically search for and connect to it.

Once the headset is connected you will see the orientation window as below:



The orientation screen allows you to test your mind control abilities and the connection before you begin. Please note that in order to go through to open the video file you must be able to hit the halfway mark for both relaxation and attention/concentration.

Full explanation of graphic avatar is in the next section below.

Once you have all three ticks and are ready to open your file click continue to go through to the main window.



Select the file you wish to open by clicking the button below:



Select the .mpy for the file you wish to play and enjoy

There are 10 buttons on the MyndPlay control, these are explained below:

Starting from the left:



About MyndPlay

Skip to previous scene

Play

Stop

Skip to Next scene

Load Movie

Quit MyndPlay

Headset connection and Orientation

Volume

Signal Meter

Myndplay Avatar

Whenever an interactive element of the movie or video file is reading your brainwaves you will see the meters below appear on the bottom left of your screen.

Relaxation is displayed with the blue meter, and attention/focus is displayed by the red meter, the closer you are to the red and blue zones the more relaxed and focused you are, peak performance is training yourself to do both simultaneously.



Troubleshooting

Playback Issues

If you experience a black screen, audio only or any other playback issues please ensure you have the latest VLC Player installed with ActiveX control enabled

If you have any other issues and require support please email support@myndplay.com, please also report any bugs or feedback to help us improve our system.

Enjoy!