



MyndPlay Pro 2.12 User Manual

This manual has been written to guide you through the installation and interface of the revolutionary MyndPlay Pro media player and neurofeedback tool.

What is MyndPlay Pro?

MyndPlay Pro is an all in one EEG neurofeedback recording, reporting and analysis tool which also includes the revolutionary MyndPlay media player so you can now watch any video and record/view your brains reactions in real-time.

It was developed with the user in mind, it has a simple user interface but includes everything you could want in a system without the need for clutter, and is packed with features and tools which have previously been expensive and difficult to understand.

MyndPlay Pro makes research, training and neurofeedback development easy, accessible and affordable.

System Requirements

Platform Requirements: Mac & Windows XP, Vista, 7
35MB of space required (not including content)

Before Installing MyndPlayer Pro

Windows users must first install the latest VLC player from <http://www.videolan.org/vlc/>

Pair your headset with your device and make sure it is fully charged

Installation

Windows MyndPlay installation is very simple, unzip and double click the installer file and if asked would you like to install or continue? Click yes or accept.

MyndPlay is now installed.

Mac users unzip the file, double click the DMG and copy MyndPlayer into the Applications folder.

To start MyndPlay click Start or the Windows Icon on your taskbar, go to all programs and look for the MyndPlay Ltd folder, select and click MyndPlayer to open.

Important: Before starting MyndPlayer please connect and pair your headset to your Mac or PC, and ensure it is turned on.

Using MyndPlay Pro

When you first open MyndPlay you will be taken to the headset selection screen.

Requesting headset type



Once your headset has been selected you will be taken to the home screen.



Once the headset is placed correctly on your head, the software will automatically check for a signal and the headset will connect, otherwise click the headset button to manually connect the headset

Headset button:

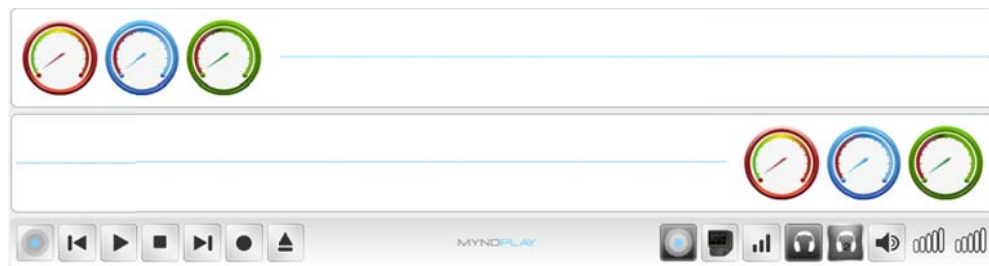


To connect a second headset to use with our 2 player applications, please select the second headset button.



Once the second headset is connected an additional row of dials will appear on your screen.

The left hand side dials are allocated to the first headset to be connected and the right side dials are allocated to the second headset.



Upon connection you will start to see your meters move and your raw data feed coming through. Please note it is important to have full signal in the right corner before the meter will become active.




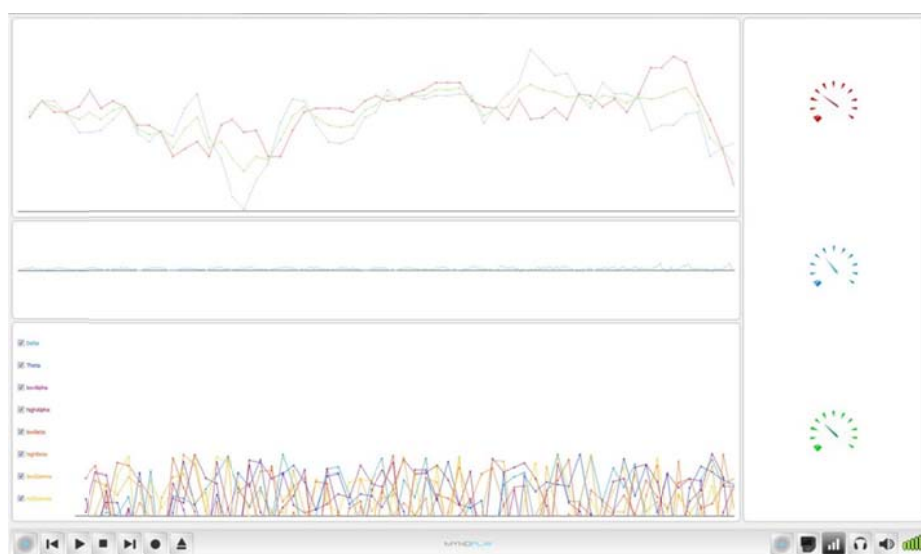
The orientation screen allows you to test your mind control abilities and the connection before you begin. The raw data feed allows you to see your brainwaves in real-time, try blinking to see your signal spike.

Full explanation of graphic avatar is in the next section below.

Once you have completed your orientation/training you can start experiencing MyndPlay Apps or the Pro featured tools.

Real Time Activity Screen

If you want more detailed information, raw data or frequency bands you can click the  button to be taken to the real time activity screen. This is shown below



To find out more about each section hover your mouse over the window.

Record and Save

MyndPlay Pro gives you the ability to record your brainwave data for further analysis, comparison, research or export. To start recording, simply click the record button.



Once you have finished your session you can press the record button again to stop and you will be asked to name the file.

You can record your data on the move, in the field or in your home; you can even view/record your brainwaves while you watch any video or movie.

The files will be saved in your EEGLogs folder.

Further analysis

If you want to view or analyse the recorded data you can use the built in Analysis tool by clicking

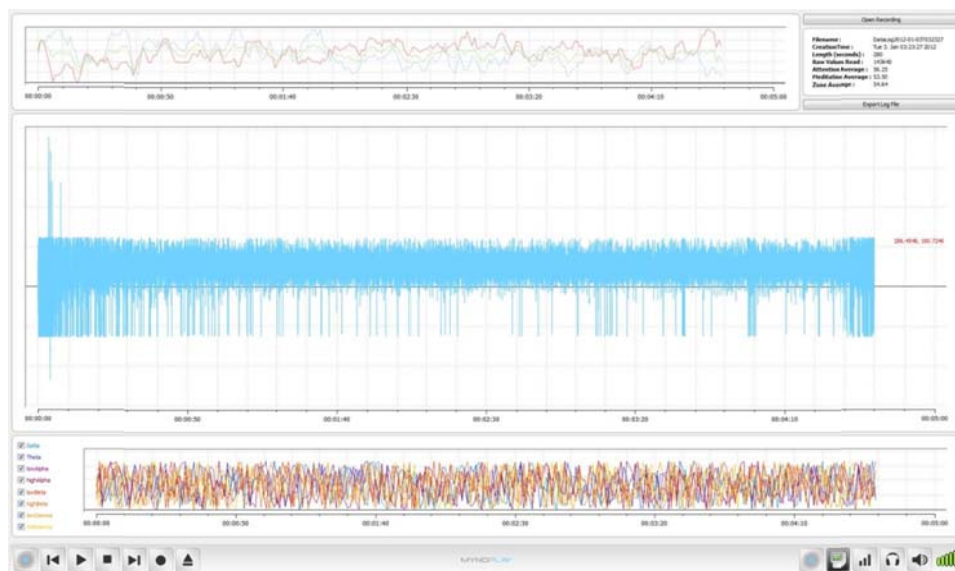


button. Within this area you can further break down and analyse the data.

To open a log file click the open recording button in the top right corner as below:



Once you have selected the recording you will see the data on a grid timeline as below:



You can hover your mouse over the grid for numerical data and can also specify which frequencies to view.

You can also export the data to .csv by clicking the export file button in the top right.

Training with MyndPlay Pro

MyndPlay Pro can be used as a research tool or a tool for validation of therapy and mental techniques, it can be used for coaching as well as personal development as it provides you everything you need to know about your mind and its strengths and weaknesses, by tracking your activity over a period of time you can fully track and develop through neurofeedback from anywhere.

Playing Interactive Videos

MyndPlay was created to make brain training fun and engaging, this is where the apps come in...

To play a MyndPlay app you must select the .mpy file you wish to open by clicking the button below:



Browse to and Select the .mpy file for the app you wish to play, and enjoy.

How to Play

The interactivity in each app is dependent upon the app and genre but the basic premise remains the same, at certain points within the movie or video a red, blue or green meter will appear on the bottom left of the screen, this is known as the reading stage, this is the point that you are in control. Your aim is to drive the meter into the peak zone to get the best possible outcome. Once you develop full control you will be able to make active choices.

The meters are explained in further detail below, you can also hover over the meter for an explanation.

With some apps you will be in control, others are designed to react to you so do not worry if you cannot gain full control instantly, it takes effort and persistence.

There are 12 buttons on the MyndPlayer Pro 2.0 toolbar, these are explained below:

Starting from the left:



About MyndPlay

Skip to previous scene

Play (to play an app click on the .mpy file, to play and measure your own video click the video file)

Stop

Skip to Next scene

Load Movie

Home Screen

Activity Log Analysis

Real Time Activity Screen

Connect/Disconnect headset

Volume

Signal Meter (this is an indication of the connection to your mind, you need 5 bars to activate meters)

Myndplay Avatar

Whenever an interactive element of the movie or video file is reading your brainwaves you will see one of the meters below appear on the bottom left of your screen.



Focus/Attention: The Attention/Focus meter represents linear focus, which is the ability to block everything else out. This meter can be controlled by focusing on a single visual point or thought. Try focusing on the end point of the meter with all your conscious attention to drive the meter up. This is a vital component in mental development for athletes and leaders.

Meditation: The Meditation/Relaxation meter represents stress free mental calm, a Zen like state. Try sitting back and closing your eyes, take a few deep breaths and see that meter rise. Maintain a positive clear mind and steady breathing to master control.

Zone: The Zone meter represents a combination of both Mental Focus and Mental Calm which are vital for emotional balance, peak performance in sports and decision making. Athletes will train to remain fully focused whilst maintaining full self-belief and mental calm. Try focusing on a single thought and simultaneously regulating your breathing to obtain the desired state

Troubleshooting

No Video - If you are getting no video please check that you have the latest version of VLC player installed, you can download the latest copy of VLC from their website <http://www.videolan.org/vlc/>

MyndPlay freezes or crashes when meter appears - Please ensure that before running MyndPlayer you close the NeuroSky ThinkGear connector running in your system tray, right click and exit.

Cannot find headset - If you are using a NeuroSky MindWave, please ensure that you have connected and device using the MindWave manager prior to running MyndPlayer. If you are using a MindSet or BrainBand, please ensure your Bluetooth headset has been paired with you Mac or PC and is switched on.

Weak Signal - If you are experiencing a persistently weak signal, please check that your batteries are fully charged and that you have good skin contact with the device on all sensors. Keep the contacts clean and check that no hair is in between the skin and the sensor.

If you have any other problems not listed above please email support@myndplay.com and we will be happy to help you.